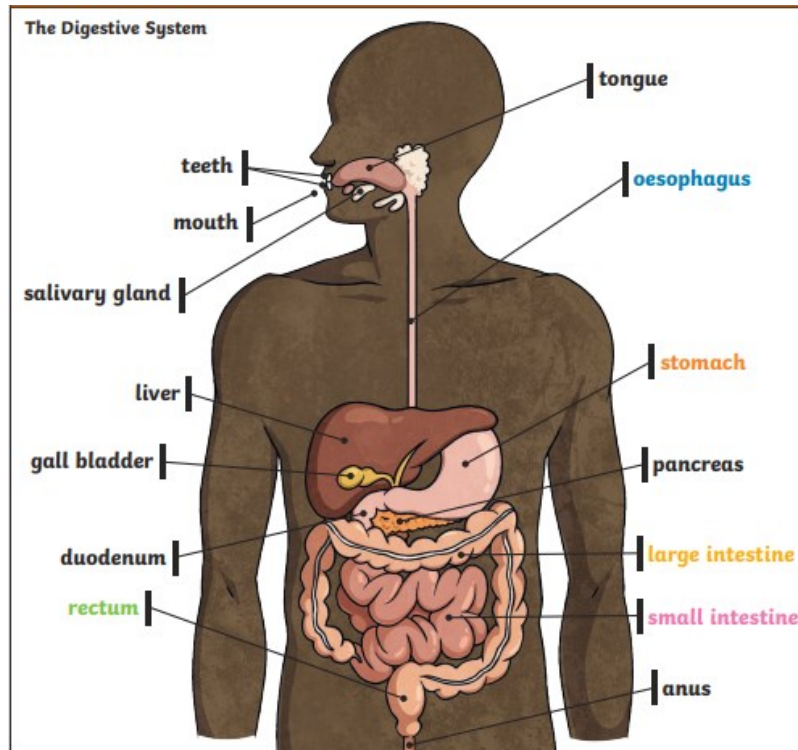


Key knowledge

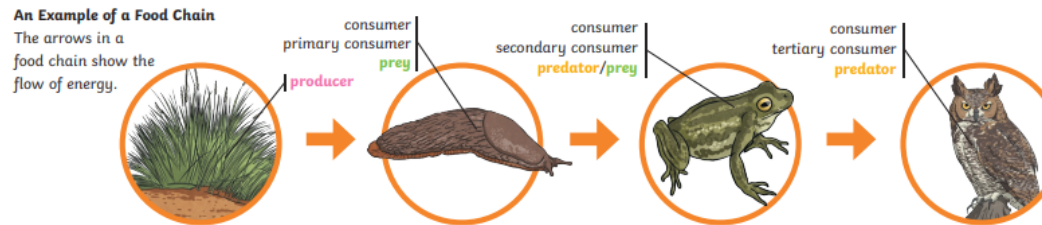
Herbivore	An animal that eats plants
Carnivore	An animal that feeds on other animals.
Omnivore	An animal that eats plants and animals.
Producer	An organism, such as a plant that produces its
Predator	An animal that hunts and eats other animals
Prey	An animal that gets hunted and eaten by



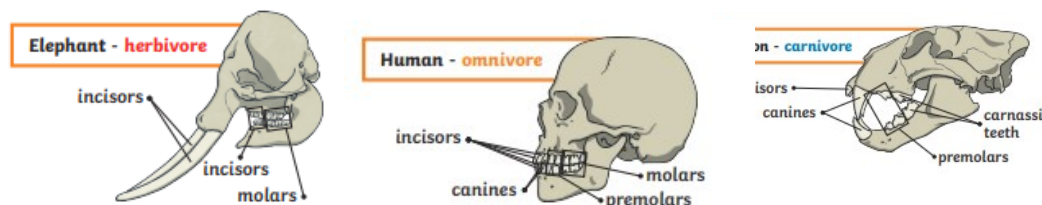
Digest	Break down food so it can be used by the body.
oesophagus	A muscular tube which moves food from the mouth to the
Stomach	An organ in the digestive system where food is broken down with stomach acid and by being churned around.
Small intestine	Part of the digestive system where nutrients are absorbed into the body
Large intestine	Part of the digestive system where water is absorbed from remaining waste food. Faeces are formed in the large intestine.
Rectum	Part of the digestive system where faeces are stored before leaving the body through the anus

I will be able to

- Describe the simple functions of the basic parts of the human digestive system
- Identify different types of teeth in humans and their function
- Construct and interpret a variety of food chains



The teeth of an animal are designed to eat different foods depending on the diet

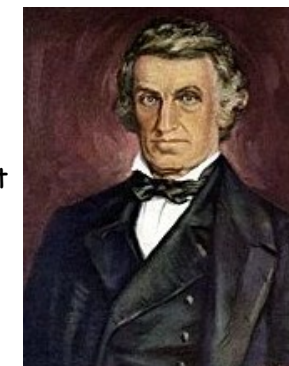


Investigation

To find out about what damages teeth and how to look after them:

- Can I use simple results to draw conclusions?
- Can I suggest explanations for my findings?

Famous Scientists



William Beaumont
1785-1853
He was an Army surgeon and the first person to study the human digestive system